

## Honeywell Variable Frequency Drives

- The lowest installed-cost frequency drives available
- Precisely regulate motor frequency
- Install quickly
- Pay for themselves in energy savings



# Honeywell CXS and CXL Variable Frequency Drives

## Precise motor frequency regulation

Our comprehensive offering of CXS and CXL variable frequency drives uses the latest IGBT frequency inverter technology for more efficient motor operation. These compact, lightweight drives are easy to install and provide significant energy savings. Plus, they're built to last, allow easy commissioning and start-up, and offer Honeywell quality and reliability. All of this adds up to Honeywell Variable Frequency Drives being your best value.

## Sophisticated technology saves time and money

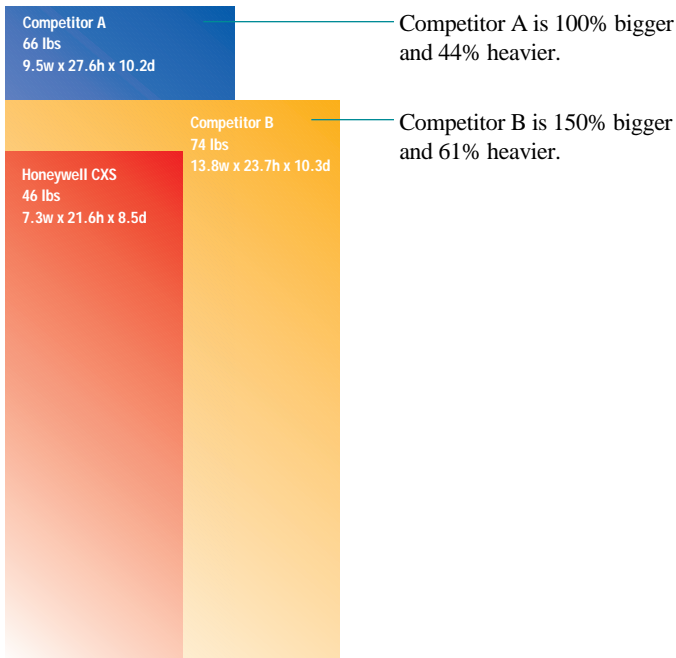
Adding Honeywell variable frequency drives (VFDs) to a commercial HVAC system—whether the application is demanding or simple—immediately provides three operational benefits for your customer.

1. The drives require much less installation time because of built-in A/C chokes and RFI filters.
2. Once installed, they control the operation of motors at lower speeds and extend motor life.
3. Lower motor speeds mean less energy consumed and lower cost utility bills.

## Quick installation

Our VFD's are leaner and lighter than the competition's drives. In fact, most Honeywell VFD's can be installed by one person. And even the largest drives can be wall mounted!

## Bigger isn't better.



30HP, 460 volt, NEMA1 VFD's

Honeywell offers the control you need in the smallest possible package—meaning less installation time and cost. Our 3/4 hp model is only 9 pounds; our 125 hp model weighs only 220 pounds.

## Easy commissioning and setup

Honeywell variable frequency drives are not only compact and lightweight, but they allow easy commissioning and setup.

- Seven prepackaged application setups save time.
- You can quickly enter parameters for your specific application without additional scrolling/setup.
- FREE Windows-based commissioning software allows you to monitor frequency drive performance or commission the drive from a PC. You can upload parameters already installed or download and monitor your own preconfigured parameter files.
  - easily create drive-specific parameter files
  - directly monitor or change drive parameters via RS232 connection

## Removable, user-friendly displays

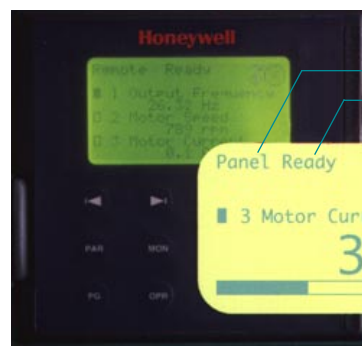
### Run Status Indicators

- RUN = lights when motor is running
- READY = lights when input voltage is supplied and the unit is ready for use
- FAULT = Lights when a fault in frequency drive occurs
- STOP = Lights when motor is not running
- ALARM = Lights when a warning is given
- PANEL/REMOTE = Shows the active control source



Alpha-numeric display

User-friendly alpha-numeric LCD display is easy to read and allows fast status monitoring and parameter adjustments. It also can be quickly removed to prevent tampering, or can be mounted remotely using a RS232 cable.



### Status Indicators

- Panel/remote
- Ready/fault
- Rotation direction
- Status of motor: run/stop
- Name of monitored signal
- Value of monitored signal
- Bar graph indication

Graphical display

Optional snap-out graphical display is available which can simultaneously sample three different values and show them as real-time value graphs. It also lets you copy parameter sets between variable frequency drives, and monitor data points and specific graph data. Select text readout in English, French or German.

## Optional, time-saving accessories

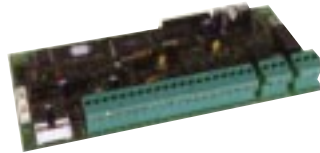
### Bypass feature.

Provides quick power disconnect (OFF mode), power only to the VFD (TEST mode), power through the VFD to the motor (NORMAL mode), and power directly to the motor (BYPASS mode). This allows maximum flexibility for motor replacement and normal maintenance.



### Communications boards.

Fast remote parameter setting is possible with PC communications boards such as: MOD BUS, Lon BUS; or C-BUS. Models for internal or external mounting are available.



### Brake resistors.

Used on drives equipped with a brake chopper. Increases the dissipation rate of heat generated by rapid motor slowdown.



### Du/Dt filter.

When placed between drive and motor, the Du/Dt filter helps prevent harmonic distortion by reducing voltage spikes. Suggested for use with older, non-VFD rated motors. Helps reduce motor insulation breakdown.

## Comprehensive offering

Our broad model offering provides the highest power/volume ratio in the market with your choice of:

- 208/230 or 460 Vac
- 3/4 to 150 horsepower
- NEMA 1 or NEMA 12 enclosure
- Built-in commercial or industrial RFI filters
- Standard A/C choke on all models  $\geq 3$  HP which improves the waveform of input current and reduces HF disturbances
- Brake choppers for rapid motor slow down (standard on CXS, optional on CXL models)
- State-of-the-art IGBT circuitry (Insulated Gate Bipolar Transistor)

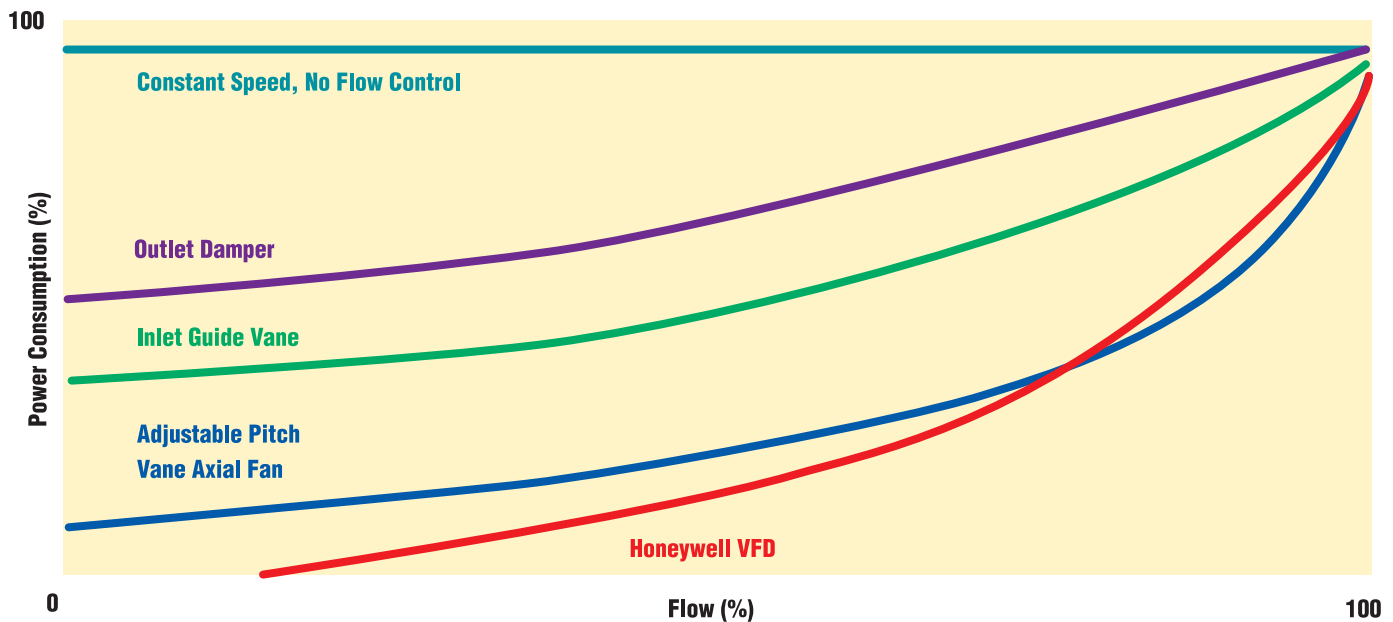
All Honeywell VFDs are manufactured to comply with stringent international standards including the ISO 9000 standard.

## VFDs pay for themselves with energy savings

Facility or property managers/owners will benefit from dramatic energy savings.

- Energy costs are reduced by 50 to 80 percent.
- Operating at lower speeds extends motor life.
- Typical payback within 1–5 years.
- Lower electrical consumption helps protect the environment.

## Energy Savings



Compare the energy savings possible with a Honeywell Variable Frequency Drive to savings with other flow controls.

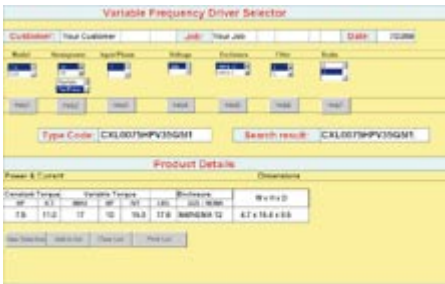
# Choose from the CXS and CXL family of variable frequency drives for all your commercial HVAC applications.

**CXS 0150HP V3 2 G 2 I 1**

<b>Product Series</b> (CXS, CXL)	<b>Motor Power</b> (Constant Torque) 0007=0.75 HP 0010=1 HP 0500=50 HP 0750=75 HP 1250=125 HP	<b>Phase</b> V3=3 phase	<b>Voltage</b> 2=230 V (-15% to +10%) 5=460 V (-15% to +10%)	<b>G=alpha</b> numeric display	<b>NEMA</b> 2=protected* chassis 5=NEMA 12 7=NEMA 1	<b>RFI Filter</b> I=industrial C=commercial N=no filter	<b>Brake</b> 0=no brake chopper 1=built-in brake chopper
-------------------------------------	---	----------------------------	--	-----------------------------------	---	--	--

\*NEMA 1 with included accessory (CXS only)

## Convenient software selection tools



**Model Selector**  
Helps you select the correct variable frequency drive for your application according to power, input/phase, voltage, and other variables.



**Energy Saving/Payback Calculator**  
Determines energy savings and pay back period based on customer's system demand schedule and variable frequency drive horsepower.



**FC Drive**  
Windows-based software allows you to quickly commission and constantly monitor your VFD via RS232 connection.

For specific model numbers or more information on CXS and CXL variable frequency drives including our convenient VFD selection tools, contact your local authorized Honeywell distributor, call 1-800-345-6770 ext. 403 or visit our website at: [www.honeywell.com/building/components](http://www.honeywell.com/building/components).

**Honeywell**

**Home and Building Control**  
Honeywell Inc.  
1985 Douglas Drive North  
Golden Valley, MN 55422-3992

**Home and Building Control**  
Honeywell Limited  
155 Gordon Baker Road  
North York, Ontario M2H 3N7

[www.honeywell.com](http://www.honeywell.com)

